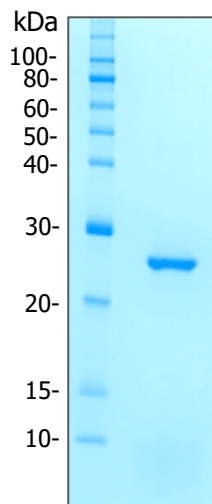


Code; RP851-200
Lot; xxxx
Size; 200 µg

Recombinant Canine C-reactive protein

Package;	200µg
Source;	Recombinant protein with a C-terminal 6-His tag, expressed in <i>Brevibacillus choshinensis</i> HPD31.
Sequence ;	AGSQIDLDEKAFVFPRESENSYVILFPQLQKPMKAFTVCLQVYTDLTRPH SLFSYATKSQSNEILLFKERPGLFSVSVGGSDAFINFPQKFYAPQHFCVT WESVTGLTELWVDGKPMVRASLRRGYTVGSGASIVLGQEQDSFGGGF DKNQSLVGDIEDVNMWDFVLSPSQILTLYTTRALSPNVLNWRNLRYET RGEVFLKKELWS
MW;	24.2KDa
Formulation;	0.2 µm filtered solution in 20mM Tris-HCl (pH7.5), 150mM NaCl, 2mM CaCl ₂ , 0.2M Arginine.
Purity;	95%, as determined by SDS-PAGE visualized by CBB stain.
Concentration;	0.30mg/mL
Storage;	Stored at -20°C. Avoid repeated freeze-thaw cycles.



SDS-PAGE analysis

For Research Use Only. Not for use in diagnostic procedures

ProteinExpress Co., Ltd.

2-1-6, Kazusakamatari, Kisarazu-shi, Chiba 292-0818, Japan
Tel: +81-438-52-0112, Fax: + 81-438-52-0113
E-mail; service@proteinexpress.co.jp
URL; <https://www.proteinexpress.co.jp>