

Code; RP901-xxx
Lot; xxxxx
Size; xxxxx µg



ProteinExpress

human FGF-7 (KGF, recombinant)

Source : E. coli-derived human KGF/FGF-7 protein (Accession No. P21781).

Molecular Weight : 17kDa.

Purity : > 95%, as determined by SDS-PAGE visualized by CBB stain.

Endotoxin level : <0.10 EU per 1 µg of the protein by the LAL method.

Activity : Measured in a cell proliferation assay.

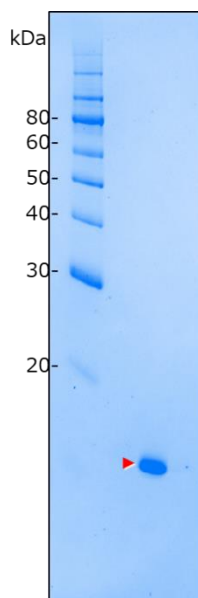
The ED50 for this effect is typically <50 ng/mL.

Formulation : Lyophilized from a 0.2 µm filtered solution in PBS.

Reconstitution : Reconstitute at 100 µg/mL in sterile water.

Storage : -20 to -70 °C under sterile conditions after reconstitution.

SDS-PAGE analysis :



For Research Use Only. Not for use in diagnostic procedures

ProteinExpress Co., Ltd.

2-1-6, Kazusakamatari, Kisarazu-shi, Chiba 292-0818, Japan
Tel: +81-438-52-0112, Fax: + 81-438-52-0113
E-mail; service@proteinexpress.co.jp
URL; <http://www.proteinexpress.co.jp>