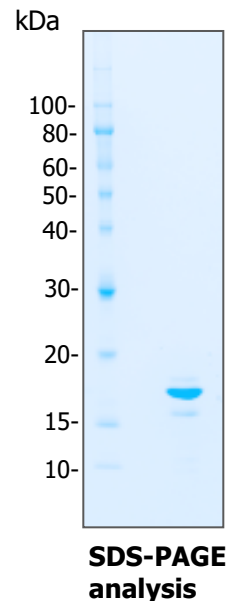


Code; RP821-100
Lot; xxxxx
Size; 100 µg

Recombinant Human PD-1

Package;	100µg
Alternative name	Programmed cell death-1, PDCD1
Source	Recombinant protein human PD-1 with a C-terminal Myc tag and 6-His tag, expressed in <i>Brevibacillus choshinensis</i> HPD31.
Sequence ;	AGSLDSPDRPWNPPTFSPALLVWTEGDNATFTCSFSNTSESVLNW YRMSPSNQTDKLAAFPEDRSQPGQDSRFRVTQLPNGRDFHMSVR ARRNDSGTYLCGAISLAPKAQIKESLRAELRV/TERRAEVPTAHPSPSP RPAGQFQTLV
MW;	18.5KDa
Formulation	Lyophilized from a 0.2 µm filtered solution in PBS.
Purity	95%, as determined by SDS-PAGE visualized by CBB stain.
Activity;	Measurement of binding with PD-L1 (Human, Code; RP822) by ELISA.
Storage;	Shipped at 4°C, stored at -20°C or lower for long term storage. After reconstitution, prepare aliquots and store at -80°C. Avoid repeated freeze-thaw cycles.
Reconstitution	To reconstitute the lyophilized protein in <u>100µL</u> sterile deionized water to a final concentration of 1.0mg/mL.



For Research Use Only. Not for use in diagnostic procedures

ProteinExpress Co., Ltd.

2-1-6, Kazusakamatari, Kisarazu-shi, Chiba 292-0818, Japan
Tel: +81-438-52-0112, Fax: + 81-438-52-0113
E-mail; service@proteinexpress.co.jp
URL; <http://www.proteinexpress.co.jp>