



ProteinExpress

ProteinExpress Co., Ltd.
Chiba University Inohana Innovation Plaza
1-8-15, Inohana, Chuo-ku,
Chiba-shi, Chiba 260-0856, Japan
Tel: +81-43-202-5755, Fax: +81-43-202-5756
E-mail: antibody@proteinexpress.co.jp
Web: www.proteinexpress.co.jp

Anti-Mouse ATPGD1 (KIAA1394) Polyclonal Antibody, Rabbit

Code # : MKA1394 [FSR00824], (Lot# XXX)

Gene : mouse ATP-grasp domain containing 1 (mATPGD1, mKIAA1394)

Immunogen : GX0747 (GST-fusion protein, 146 amino acids)
GAGPRLEINPRMGGFYLRDWILELYGVDLLLASTMVACGLQPALPAHPRARGYLVGIMCLVSQ
HLQLLSSPSSRETLQTLHDQGLRLNLLLEEALIPGQYEEPYCNVACAGPSPAEACHRLLGICQG
LGIDRPNYPVAHFLSHFK

Format : Rabbit Whole Serum

Preservative : 0.05 % NaN₃

Quantity : 100 µL

Specificity : Specific to recombinant protein GX0747. This antibody detects mATPGD1 protein. It also recognizes human ATPGD1 protein. Other species have not been tested.

Application : Western blotting (1 : 1,000), Other applications have not been tested.

Storage : Store at -20°C. Avoid freeze-thaw cycles.

References : 1) Okazaki, N. et al.: DNA Res., 10(1), 35 (2003).

For research use only, not for diagnostic use



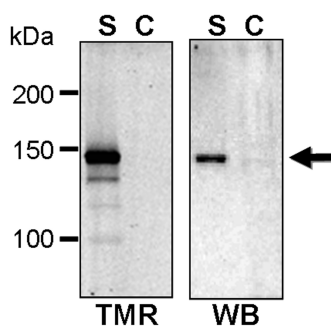
Kazusa DNA Research Institute
2-6-7, Kazusa-kamatari,
Kisarazu, Chiba 292-0818 JAPAN
<http://www.kazusa.or.jp>



ProteinExpress

ProteinExpress Co., Ltd.
Chiba University Inohana Innovation Plaza
1-8-15, Inohana, Chuo-ku,
Chiba-shi, Chiba 260-0856, Japan
Tel: +81-43-202-5755, Fax: +81-43-202-5756
E-mail: antibody@proteinexpress.co.jp
Web: www.proteinexpress.co.jp

Anti-Mouse ATPGD1 (KIAA1394)



TMR-Label(Left) & Western blot(Right)

**S: Total lysate of HaloTag-fused KIAA1394
expressed HEK293 cells (4 μ g)**

C: Control HEK293 cell lysate (4 μ g)



Kazusa DNA Research Institute
2-6-7, Kazusa-kamatari,
Kisarazu, Chiba 292-0818 JAPAN
<http://www.kazusa.or.jp>