



# ProteinExpress

ProteinExpress Co., Ltd.  
Chiba University Inohana Innovation Plaza  
1-8-15, Inohana, Chuo-ku,  
Chiba-shi, Chiba 260-0856, Japan  
Tel: +81-43-202-5755, Fax: +81-43-202-5756  
E-mail: [antibody@proteinexpress.co.jp](mailto:antibody@proteinexpress.co.jp)  
Web: [www.proteinexpress.co.jp](http://www.proteinexpress.co.jp)

## Anti-Mouse TBC1D24 (KIAA1171) Polyclonal Antibody, Rabbit

**Code # :** MKA1171PA [FIG00755], (Lot# XXX)

**Gene :** mouse TBC1 domain family, member 24 (mTBC1D24, mKIAA1171)

**Immunogen :** GX0722 (GST-fusion protein, 129 amino acids)  
FRLQPEVQRYEWWVIKHPKATSLKSSEAAGSSSLIGHCSDPADRLSPFLAARHFNLPSKT  
ESMFMAGGNDCLIIGGGGGQALYVDGDLNRGRTGHCDTFNNQPLCSENFLIAAVEAWGFQDP  
DTE

**Format :** Rabbit IgG purified with Protein A affinity chromatography.

**Constitution :** PBS containing with 50% glycerol and 0.02% of NaN<sub>3</sub>

**Quantity :** 100 µg (200 µL)

**Specificity :** Specific to recombinant protein GX0722. This antibody detects mTBC1D24 protein. It also recognizes human TBC1D24 protein. Other species have not been tested.

**Application :** Western blotting (1 : 1,000), Other applications have not been tested.

**Storage :** Store at -20°C. Avoid freeze-thaw cycles.

**References :** 1) Okazaki, N. et al.: DNA Res., 10(1), 35 (2003).

**For research use only, not for diagnostic use**



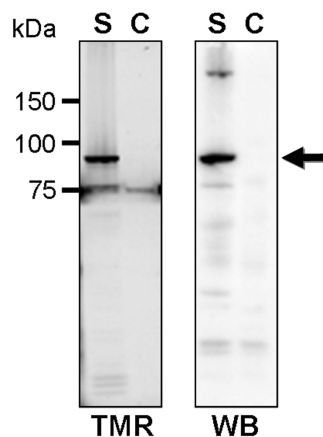
**Kazusa DNA Research Institute**  
2-6-7, Kazusa-kamatari,  
Kisarazu, Chiba 292-0818 JAPAN  
<http://www.kazusa.or.jp>



# ProteinExpress

ProteinExpress Co., Ltd.  
Chiba University Inohana Innovation Plaza  
1-8-15, Inohana, Chuo-ku,  
Chiba-shi, Chiba 260-0856, Japan  
Tel: +81-43-202-5755, Fax: +81-43-202-5756  
E-mail: [antibody@proteinexpress.co.jp](mailto:antibody@proteinexpress.co.jp)  
Web: [www.proteinexpress.co.jp](http://www.proteinexpress.co.jp)

## Anti-Mouse TBC1D24 (KIAA1171)



### TMR-Label(Left) & Western blot(Right)

**S: Total lysate of HaloTag-fused KIAA1171  
expressed HEK293 cells (4  $\mu$ g)**

**C: Control HEK293 cell lysate (4  $\mu$ g)**



**Kazusa DNA Research Institute**  
2-6-7, Kazusa-kamatari,  
Kisarazu, Chiba 292-0818 JAPAN  
<http://www.kazusa.or.jp>