



ProteinExpress

ProteinExpress Co., Ltd.
Chiba University Inohana Innovation Plaza
1-8-15, Inohana, Chuo-ku,
Chiba-shi, Chiba 260-0856, Japan
Tel: +81-43-202-5755, Fax: +81-43-202-5756
E-mail: antibody@proteinexpress.co.jp
Web: www.proteinexpress.co.jp

Anti- Mouse EXTL3 (KIAA0519) Polyclonal Antibody, Rabbit

Code # : MKA0519 [FSR00091], (Lot# XXX)

Gene : mouse exostoses (multiple)-like 3 (mEXTL3, mKIAA0519)

Immunogen : GX2392 (GST-fusion protein, 256 amino acids)
RKYLFTFQGEKIESLRSSLQEARSFEEEMEGDPPADYDDRIATLKAVQDSKLDQVLVEFTCKNQ
PKPSLPTIEWALCGEREDRLELLKLSTFALIITPGDPRLLISSGCATRLFEALEVGAVPVVLGEQVQ
LPYHDMLQWNEAALVVPKPRVTEVHFLLRSLSDSDLLAMRRQGRFLWETYFSTADSIFNTVLA
MIRTRIQIPAAPIREEVAAEIPHRSGKAAGTDPNMADNGDLDLGPVETEPPYASPKYLRNFT

Format : Rabbit Whole Serum

Preservative : 0.05 % NaN₃

Quantity : 100 µL

Specificity : Specific to recombinant protein GX2392. This antibody detects mEXTL3 protein. It also recognizes human EXTL3 protein. Other species have not been tested.

Application : Western blotting (1 : 1,000), Other applications have not been tested.

Storage : Store at -20°C. Avoid freeze-thaw cycles.

References : 1) Okazaki,N. et al.: DNA Res., 10(1), 35 (2003).

For research use only, not for diagnostic use



Kazusa DNA Research Institute

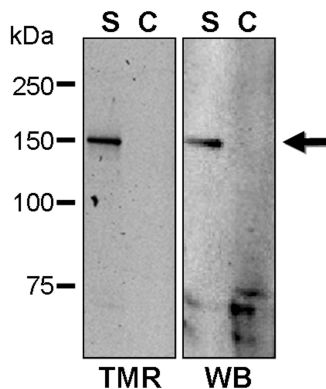
2-6-7, Kazusa-kamatari,
Kisarazu, Chiba 292-0818 JAPAN
<http://www.kazusa.or.jp>



ProteinExpress

ProteinExpress Co., Ltd.
Chiba University Inohana Innovation Plaza
1-8-15, Inohana, Chuo-ku,
Chiba-shi, Chiba 260-0856, Japan
Tel: +81-43-202-5755, Fax: +81-43-202-5756
E-mail: antibody@proteinexpress.co.jp
Web: www.proteinexpress.co.jp

Anti-Mouse EXTL3 (KIAA0519)



TMR-Label(Left) & Western blot(Right)

S: Total lysate of HaloTag-fused KIAA0519
expressed HEK293 cells (4 μ g)

C: Control HEK293 cell lysate (4 μ g)

*HaloTag (MW: Approx. 33 kDa)



Kazusa DNA Research Institute

2-6-7, Kazusa-kamatari,
Kisarazu, Chiba 292-0818 JAPAN
<http://www.kazusa.or.jp>