



ProteinExpress

ProteinExpress Co., Ltd.
Chiba University Inohana Innovation Plaza
1-8-15, Inohana, Chuo-ku,
Chiba-shi, Chiba 260-0856, Japan
Tel: +81-43-202-5755, Fax: +81-43-202-5756
E-mail: antibody@proteinexpress.co.jp
Web: www.proteinexpress.co.jp

Anti-Mouse KIF17 (KIAA1405) Polyclonal Antibody, Rabbit

Code # : MK14050310 (Lot# XXX)

Gene : mouse kinesin family member 17 (mKIF17, mKIAA1405)

Immunogen : GX0352 (GST-fusion protein, 233 amino acids)
LGGHFGDKVGREELLSACPFSVQLRAAEVEIKDLQSEFQLEKIDYLATIRRQERDSMLFQQLL
QVQPLIRRDCNYSNLEKIRRESSWDEDNGFWKIPDPILKTSPLVAVPTGTQNKPKARKTSAVD
SGEPHMQEEDRYKLMLSRSDSENIASNYFRSKRASQILSTDPMKSLTYHNSPPGLNSSLNNSALP
PTQTPEMPQPRPFRLESLEDIPFSKAKRKKSKNSFGGEPL

Format : Rabbit IgG purified with Protein A affinity chromatography.

Constitution : PBS containing with 50% glycerol and 0.02% of NaN₃

Quantity : 100 µg (200 µL)

Specificity : Specific to recombinant protein GX0352. This antibody detects endogenous mKIF17 protein in several tissues and cells. It also recognizes human KIF17 protein. Details are shown in the InGaP database. (<http://webcreate.kazusa.or.jp/create/index.jsp>) Other species have not been tested.

Application : Western blotting (1 : 1,000), Immunoprecipitation.
Other applications have not been tested.

Storage : Store at -20°C. Avoid freeze-thaw cycles.

References : 1) Hara, Y. *et al.*: *DNA Res.*, 10, 129 (2003).
2) Koga, H. *et al.*: *DNA Res.*, 11, 293 (2004).
3) Chennathukuzhi, V. *et al.*: *PNAS* 100, 15566 (2003).

For research use only, not for diagnostic use



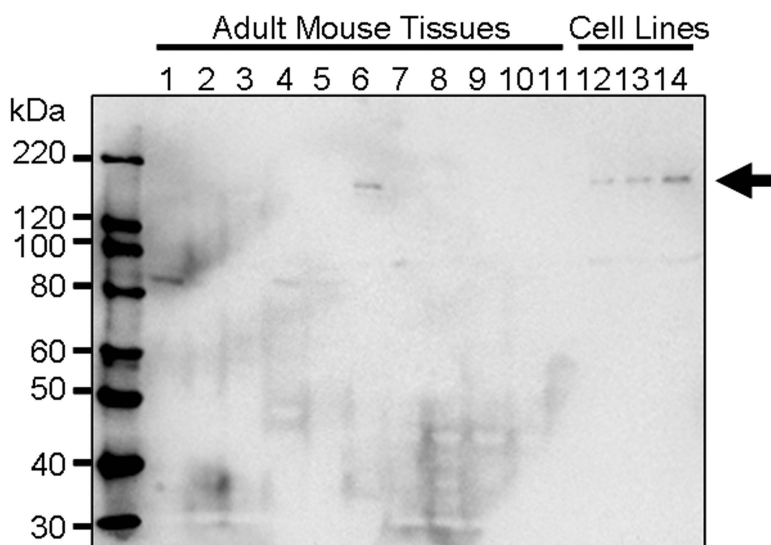
Kazusa DNA Research Institute
2-6-7, Kazusa-kamatari,
Kisarazu, Chiba 292-0818 JAPAN
<http://www.kazusa.or.jp>



ProteinExpress

ProteinExpress Co., Ltd.
Chiba University Inohana Innovation Plaza
1-8-15, Inohana, Chuo-ku,
Chiba-shi, Chiba 260-0856, Japan
Tel: +81-43-202-5755, Fax: +81-43-202-5756
E-mail: antibody@proteinexpress.co.jp
Web: www.proteinexpress.co.jp

Anti-Mouse KIF17 (KIAA1405)



Western blot analysis

Adult Mouse Tissues -

1:Heart, 2:Lung, 3:Liver, 4:Muscle, 5:Kidney,
6:Testis, 7:Pancreas, 8:Thymus, 9:Spleen,
10:Brain, 11:Prostate.

Cell Lines -

12:B16 cells, 13:F9 cells, 14:Neuro2A cells.



Kazusa DNA Research Institute

2-6-7, Kazusa-kamatari,
Kisarazu, Chiba 292-0818 JAPAN
<http://www.kazusa.or.jp>