



ProteinExpress

ProteinExpress Co., Ltd.
Chiba University Inohana Innovation Plaza
1-8-15, Inohana, Chuo-ku,
Chiba-shi, Chiba 260-0856, Japan
Tel: +81-43-202-5755, Fax: +81-43-202-5756
E-mail: antibody@proteinexpress.co.jp
Web: www.proteinexpress.co.jp

Anti-Human ZNF238 Polyclonal Antibody, Rabbit

Code # : KB4680GNP [FSR01424], (Lot# XXX)

Gene : ZNF238 (Zinc finger protein 238, Transcriptional repressor RP58, 58 kDa repressor protein, Zinc finger protein C2H2-171, Translin-associated zinc finger protein 1, TAZ-1, Zinc finger and BTB domain-containing protein 18)

Immunogen : GX5181 (GST-fusion protein, 150 amino acids)
DLAAEPGNMWMRLPSPDSAGIPQAGGAEAPHATAAGKTVASPCSSTESLSQRSVTSVRDSADV
DCVLDLSVKSSLSGVENLNSSYFSSQDVLRSNLVQVKVEKEASCDESDVGTNDYDMEHSTVKE
SVSTNNRVQYEPAPHLAPLREDSVLR

Format : Rabbit Whole Serum

Preservative : 0.05 % NaN₃

Quantity : 100 µL

Specificity : This antibody detects human ZNF238 protein. Other species have not been tested.

Application : Western blotting (1 : 1,000), Other applications have not been tested.

Storage : Store at -20°C. Avoid freeze-thaw cycles.

For research use only, not for diagnostic use



Kazusa DNA Research Institute

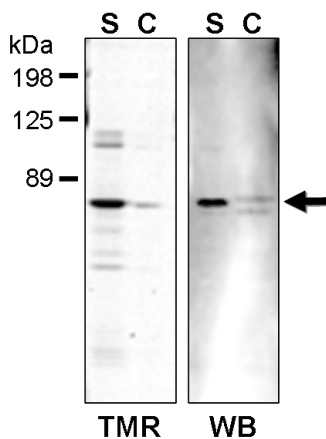
2-6-7, Kazusa-kamatari,
Kisarazu, Chiba 292-0818 JAPAN
<http://www.kazusa.or.jp>



ProteinExpress

ProteinExpress Co., Ltd.
Chiba University Inohana Innovation Plaza
1-8-15, Inohana, Chuo-ku,
Chiba-shi, Chiba 260-0856, Japan
Tel: +81-43-202-5755, Fax: +81-43-202-5756
E-mail: antibody@proteinexpress.co.jp
Web: www.proteinexpress.co.jp

Anti-Human ZNF238



TMR-Label(Left) & Western blot(Right)

S: Total lysate of HaloTag-fused ZNF238
expressed HEK293 cells (4 μ g)

C: Control HEK293 cell lysate (4 μ g)



Kazusa DNA Research Institute

2-6-7, Kazusa-kamatari,
Kisarazu, Chiba 292-0818 JAPAN
<http://www.kazusa.or.jp>