



# ProteinExpress

ProteinExpress Co., Ltd.  
Chiba University Inohana Innovation Plaza  
1-8-15, Inohana, Chuo-ku,  
Chiba-shi, Chiba 260-0856, Japan  
Tel: +81-43-202-5755, Fax: +81-43-202-5756  
E-mail: [antibody@proteinexpress.co.jp](mailto:antibody@proteinexpress.co.jp)  
Web: [www.proteinexpress.co.jp](http://www.proteinexpress.co.jp)

## Anti-Human ZBTB24 Polyclonal Antibody, Rabbit

**Code # :** KA0441GNP [FSR00537], (Lot# XXX)

**Gene :** ZBTB24 (Zinc finger and BTB domain-containing protein 24, Zinc finger protein 450)

**Immunogen :** GX5566 (GST-fusion protein, 169 amino acids)  
NTEEVNRNILQLQPYQLSTSGEQEIQLLVTDVSVHNINFMGPSQGISIVTAESSQNMTADQAAANLT  
LLTQQPEQLQNLILSAQQEQTEHIQSLNMIESQMGPSQTEPVHVITLSKETLEHLHAHQEQTEEL  
HLATSTSDPAQHLQLTQEPGPPPTHHVPQPTPLGQEQS

**Format :** Rabbit Whole Serum

**Preservative :** 0.05 % NaN<sub>3</sub>

**Quantity :** 100 µL

**Specificity :** This antibody detects human ZBTB24 protein. Other species have not been tested.

**Application :** Western blotting (1 : 1,000), Other applications have not been tested.

**Storage :** Store at -20°C. Avoid freeze-thaw cycles.

**For research use only, not for diagnostic use**



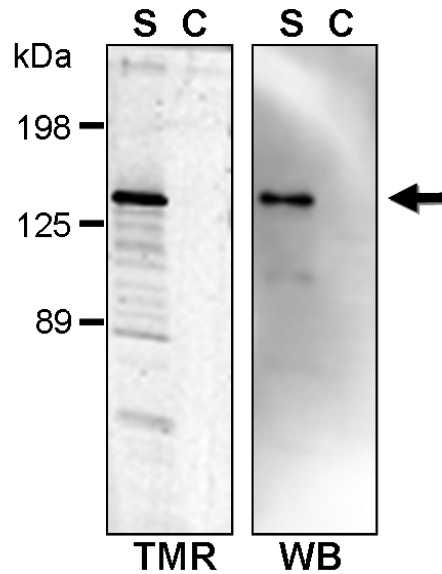
**Kazusa DNA Research Institute**  
2-6-7, Kazusa-kamatari,  
Kisarazu, Chiba 292-0818 JAPAN  
<http://www.kazusa.or.jp>



ProteinExpress

ProteinExpress Co., Ltd.  
Chiba University Inohana Innovation Plaza  
1-8-15, Inohana, Chuo-ku,  
Chiba-shi, Chiba 260-0856, Japan  
Tel: +81-43-202-5755, Fax: +81-43-202-5756  
E-mail: [antibody@proteinexpress.co.jp](mailto:antibody@proteinexpress.co.jp)  
Web: [www.proteinexpress.co.jp](http://www.proteinexpress.co.jp)

**Anti-Human ZBTB24 (KA0441GNP)**



**TMR-Label(Left) & Western blot(Right)**  
**S: Total lysate of HaloTag-fused ZBTB24  
expressed HEK293 cells (4  $\mu$ g)**  
**C: Control HEK293 cell lysate (4  $\mu$ g)**



Kazusa DNA Research Institute  
2-6-7, Kazusa-kamatari,  
Kisarazu, Chiba 292-0818 JAPAN  
<http://www.kazusa.or.jp>