

Code; RP607

Lot;

Size; 1  $\mu$ g



ProteinExpress

# TAMRA-FGF2, pin-point labeled

Pin-point TAMRA-labeled Fibroblast Growth factor, basic (human)

---

FGF2 (Accession No. P09038), pin-point labeled with TAMRA, was produced in the *E. coli* cell-free translation system in the presence of TAMRA-C6-*p*-aminophenylalanine (TAMRA-aminophenylalanine) amber suppressor tRNA, which is the one of the CloverDirect™ tRNA reagents for site-directed protein labeling<sup>1</sup>). Using amber suppression<sup>2</sup>), TAMRA-aminophenylalanine is site-specifically incorporated at the amber stop codon (UAG) position.

TAMRA-FGF2 has the N-terminal ProX tag, which is the sequence tag optimized for high productivity and high introducing efficiency of TAMRA-aminophenylalanine, and has the C-terminal hexahistidine tag.

The concentration of Pin-point TAMRA-FGF2 was measured by TAMRA fluorescence intensity using with TAMRA dye as a standard. TAMRA-FGF2 was purified by metal chelating-column.

*Additional information;* The identical labeled protein, TAMRA-FGF2, is able to be produced by Pin-point Fluorescence Labeling Kit 543<sup>3</sup>), using with frame shift suppression (CGGG codon) instead of amber suppression.

<sup>1</sup>) [http://www.proteinexpress.co.jp/j/products/reagent/cloverdirect\\_2.htm](http://www.proteinexpress.co.jp/j/products/reagent/cloverdirect_2.htm)

<sup>2</sup>) Science, 244,182-188 (1989)

<sup>3</sup>) [http://www.proteinexpress.co.jp/j/products/reagent/pin-point\\_kit\\_1.htm](http://www.proteinexpress.co.jp/j/products/reagent/pin-point_kit_1.htm)

Package; 1  $\mu$ g

( 1  $\mu$ g/ml solution, 5mM Tris-HCl pH7.4, 150mM NaCl ,  
0.1 % (v/w) polyoxyethylene (23) lauryl ether , 20% Glycerol)

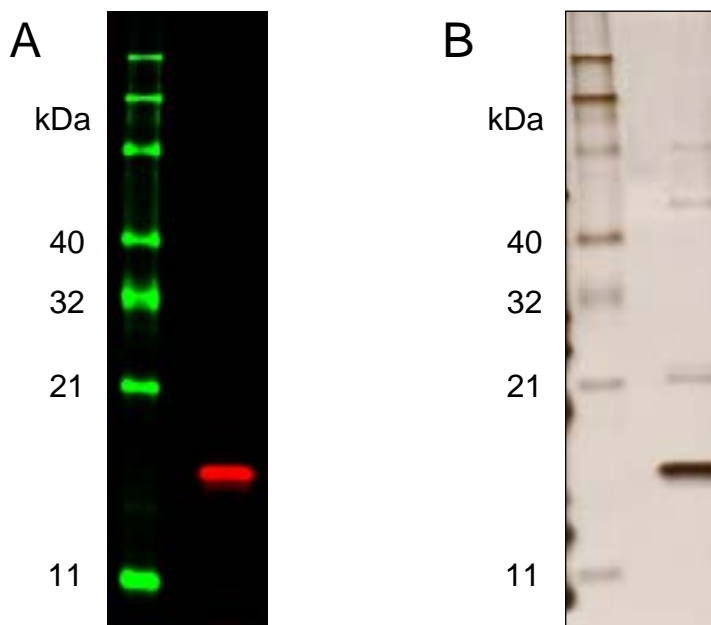
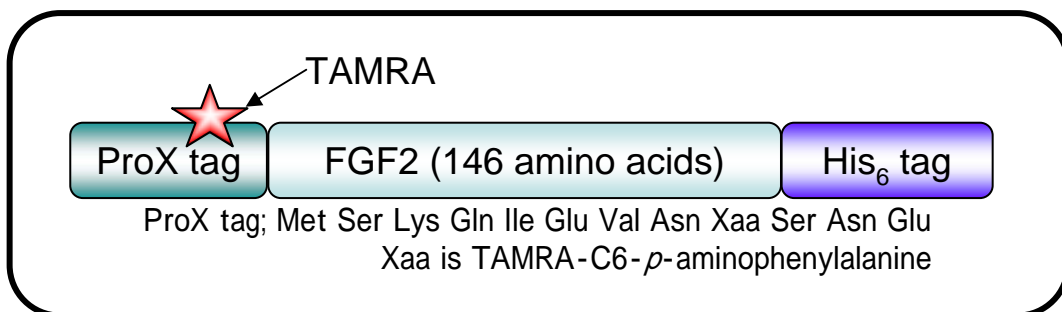
Activity; The ED<sub>50</sub> is 0.2 - 1.0 ng/ml, determined by cell proliferation assay using BALB/c3T3 cells.

Storage; -80°C

MW; 19.7 kDa

Abs/Em\*; 546/575 nm

\*Approximate absorption (Abs) and fluorescence emission (Em) maxima of TAMRA dye



**SDS-PAGE analysis of purified TAMRA-FGF2**

A; fluorescence image, B; silver-stain

For Research Use Only. Not for use in diagnostic procedures

**ProteinExpress Co., Ltd.**

Chiba University Inohana Innovation Plaza  
1-8-15, Inohana, Chuo-ku, Chiba-shi, Chiba 260-0856, Japan  
Tel: +81-43-202-5755, Fax: +81-43-202-5756  
E-mail; [service@proteinexpress.co.jp](mailto:service@proteinexpress.co.jp)  
URL; <http://www.proteinexpress.co.jp>