

Code; RP603

Lot;

Size; 1 μ g



ProteinExpress

TAMRA-IL-2, pin-point labeled

Pin-point TAMRA-labeled Interleukin-2 (human)

IL-2 (Accession No. P60568), pin-point labeled with TAMRA, was produced in the *E. coli* cell-free translation system in the presence of TAMRA-C6-*p*-aminophenylalanine (TAMRA-aminophenylalanine) amber suppressor tRNA, which is the one of the CloverDirect™ tRNA reagents for site-directed protein labeling¹). Using amber suppression²), TAMRA-aminophenylalanine is site-specifically incorporated at the amber stop codon (UAG) position.

TAMRA-IL-2 has the N-terminal ProX tag, which is the sequence tag optimized for high productivity and high introducing efficiency of TAMRA-aminophenylalanine, and has the C-terminal hexahistidine tag.

The concentration of Pin-point TAMRA-IL-2 was measured by TAMRA fluorescence intensity using with TAMRA dye as a standard. TAMRA-IL-2 was purified by metal chelating-column.

Additional information; The identical labeled protein, TAMRA-IL-2, is able to be produced by Pin-point Fluorescence Labeling Kit 543³), using with frame shift suppression (CGGG codon) instead of amber suppression.

¹) http://www.proteinexpress.co.jp/j/products/reagent/cloverdirect_2.htm

²) Science, 244,182-188 (1989)

³) http://www.proteinexpress.co.jp/j/products/reagent/pin-point_kit_1.htm

Package; 1 μ g

(1 μ g/ml solution, 0.1 % (v/w) polyoxyethylene (23) lauryl ether in PBS)

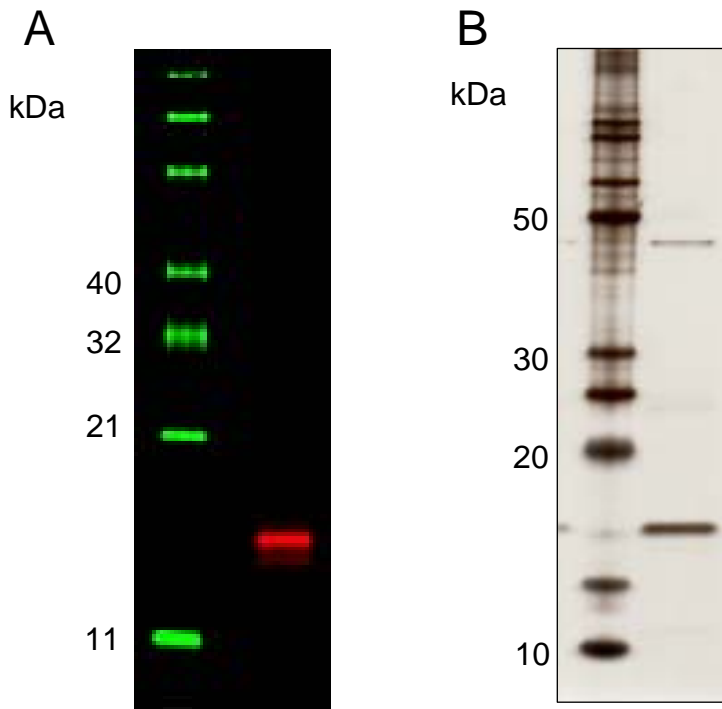
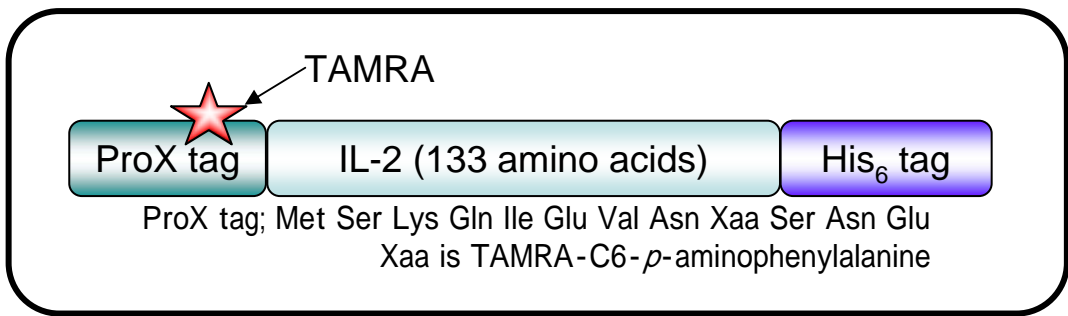
Activity; The ED₅₀ is 0.1-0.2 ng/ml, determined by cell proliferation assay using CTLL-2 cells.

Storage; -80°C

MW; 18.6 kDa

Abs/Em*; 546/575 nm

*Approximate absorption (Abs) and fluorescence emission (Em) maxima of TAMRA dye



SDS-PAGE analysis of purified TAMRA-IL-2
A; fluorescence image , B; silver-stain

For Research Use Only. Not for use in diagnostic procedures

ProteinExpress Co., Ltd.

Chiba University Inohana Innovation Plaza
1-8-15, Inohana, Chuo-ku, Chiba-shi, Chiba 260-0856, Japan
Tel: +81-43-202-5755, Fax: +81-43-202-5756
E-mail; service@proteinexpress.co.jp
URL; <http://www.proteinexpress.co.jp>